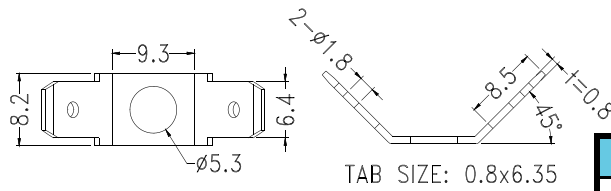


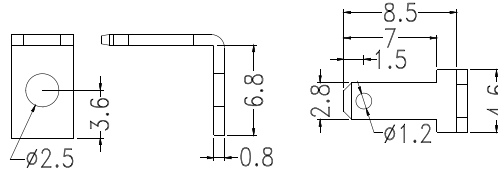
Electronic Component - P.C.B TERMINAL

Hankook Fastener

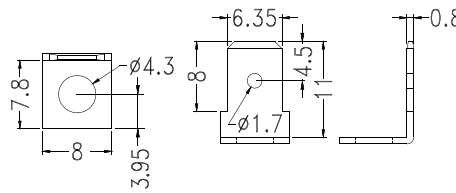


- ◆ MATERIAL: TIN PLATED BRASS
- ◆ UNIT:mm

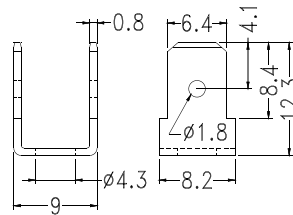
PART NO	PACKAGE
PC2L25005	1000



PART NO	PACKAGE
PC3L110028	1000

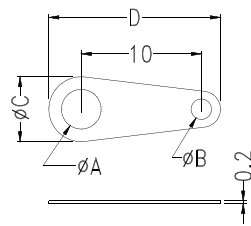


PART NO	PACKAGE
PC3L25004	1000



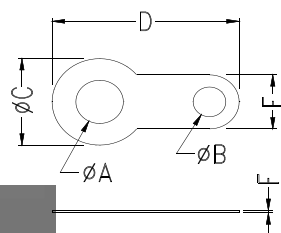
PART NO	PACKAGE
PC2L250-90	1000

Electronic Component - GROUND TERMINAL

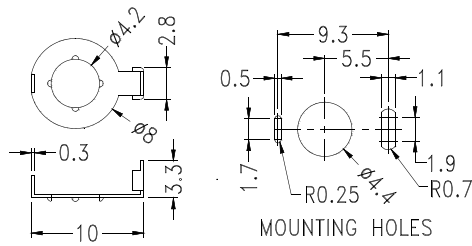


- ◆ MATERIAL: NICKEL PLATED BRASS
- ◆ UNIT:mm

PART NO	A	B	C	D	PACKAGE
GND-1	3.2	1.6	5.5	14.3	2000
GND-3A	4.1	2.4	6.5	15.5	

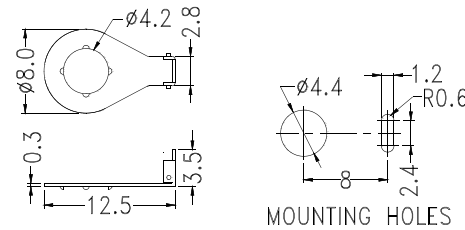


PART NO	A	B	C	D	E	F	PACKAGE
GND-2	3.2	2.1	6.4	12.6	4.0	0.25	2000
GND-3	4.3	2.0	8.0	17.7	4.6	0.3	
GND-4	5.2	2.1	9.9	19.6	5.1		
GND-5	8.3	1.9	10.0	15.0	4.0		1000
GND-6	9.7	2.0	13.0	21.5			
GND-10	6.3	2.1	10.0	19.9	5.1	0.3	2000
GND-11	9.0	2.0	13.0	30.0	4.0		1000
GND-17	4.2	1.6	6.8	12.9	3.2	0.4	2000
GND-21	3.7		6.3	12.6			

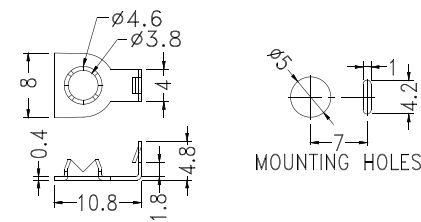


- ◆ MATERIAL: PHOSPHOR BRONZE WITH NICKEL PLATED
- ◆ UNIT: mm

PART NO	PACKAGE
GND-7	1000

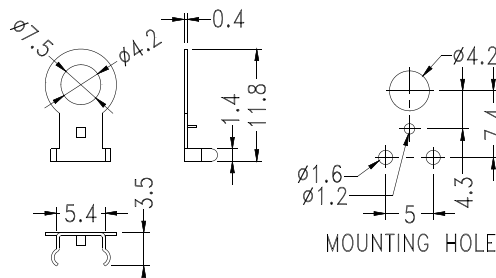


PART NO	PACKAGE
GND-8	1000

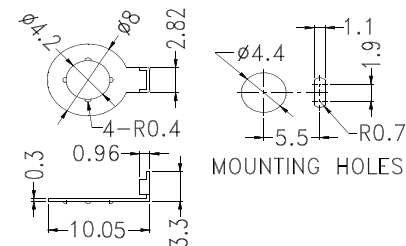


- ◆ MATERIAL: TIN PLATED BRASS
- ◆ UNIT: mm

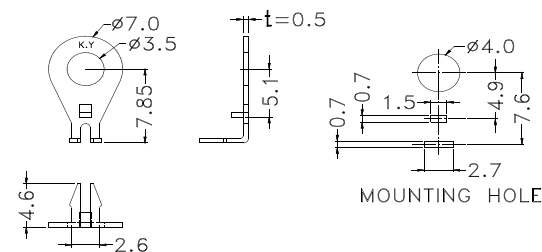
PART NO	PACKAGE
GND-12	1000



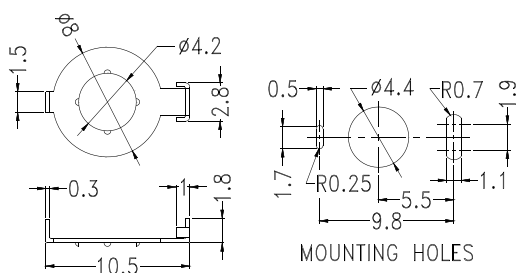
PART NO	PACKAGE
GND-13	1000



PART NO	PACKAGE
GND-14	1000



PART NO	PACKAGE
GND-15	2000



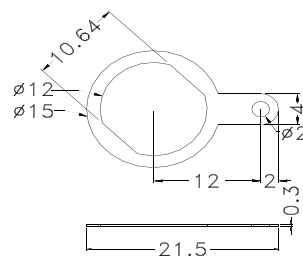
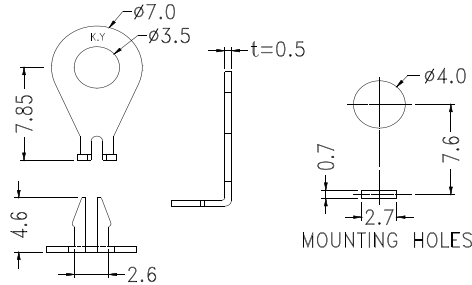
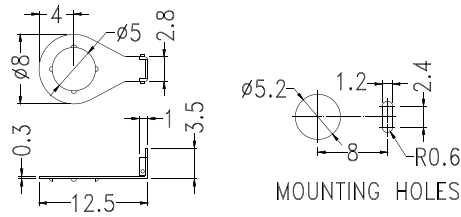
PART NO	PACKAGE
GND-19A	1000

Electronic Component - GROUND TERMINAL

Hankook Fastener

- ◆ MATERIAL: PHOSPHOR BRONZE TIN PLATED
- ◆ UNIT: mm

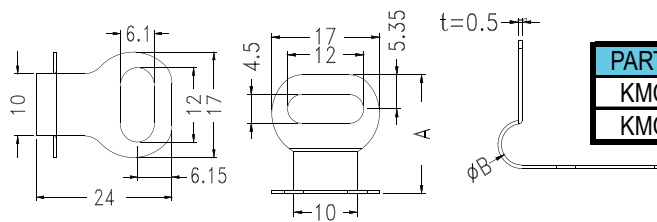
PART NO	PACKAGE
GND-20	2000



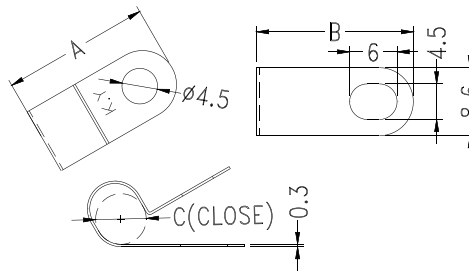
- ◆ MATERIAL: TIN PLATED BRASS
- ◆ UNIT: mm

PART NO	PACKAGE
GND-23	2000

PART NO	PACKAGE
GND-24	2000



PART NO	A	B
KMCC-1	18.55	6.0
KMCC-2	19.6	8.0



PART NO	A	B	C
KTCC-3			3.0
★ KTCC-4	17.20	17.60	4.0
KTCC-5	17.90	18.70	4.8
KTCC-6	18.70	19.80	6.4
KTCC-9	18.65	20.62	9.0